

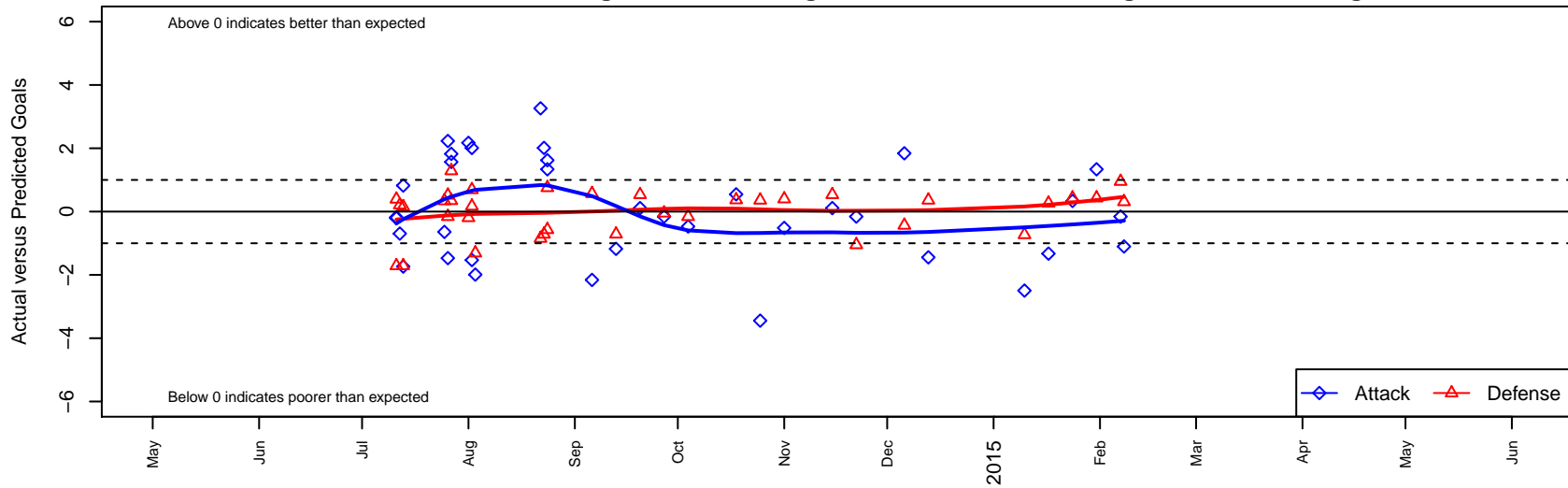
## BYSC Select Blue Angels G02

Bellevue Youth SC  
 Bellevue, WA  
 G02 total strength=816  
 attack=0.96 defense=1.17  
 fall league = NPSL G12D1  
 notes= Robinson 2014

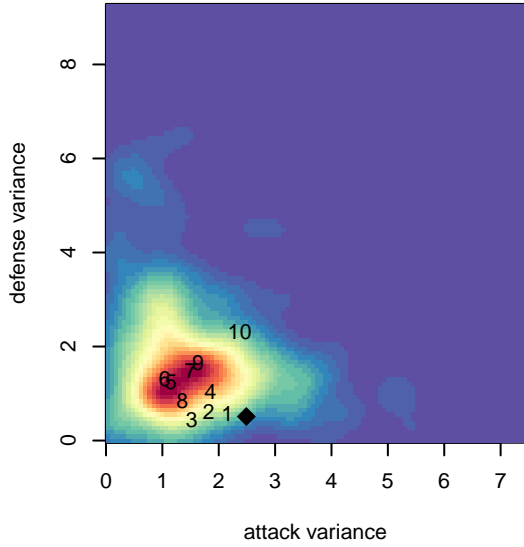
alt names used:  
 BELLEVUE YOUTH SOCCER BLUE ANGELS  
 BYSC Blue Angels  
 2014 BYSC Select GU12 Robinson  
 BELLEVUE YOUTH SOCCER BLUE ANGELS  
 BYSC GU12 Select Robinson  
 BYSC Blue Angels [G02]

Venues played:  
 2014 Kent Cornucopia Cup U12 Gold U12  
 2014 Crossfire Select Cup GU12 Gold  
 2014 Bend Premier Cup U12G BRONZE U12  
 2014 Xtreme Cup GU12  
 2014 NPSL G12D1  
 2014 Founders Cup G02

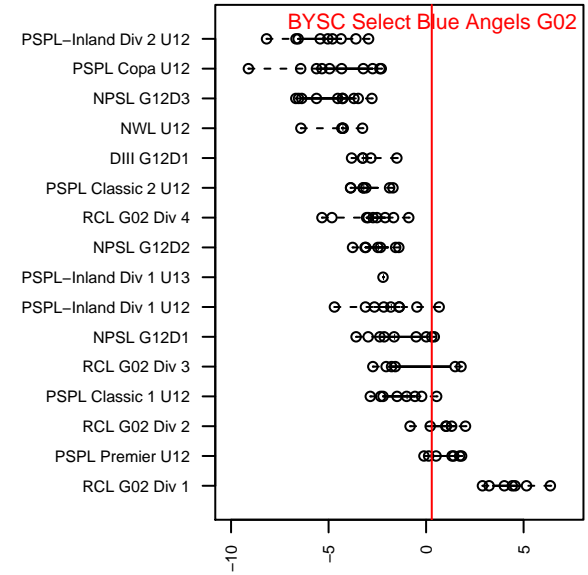
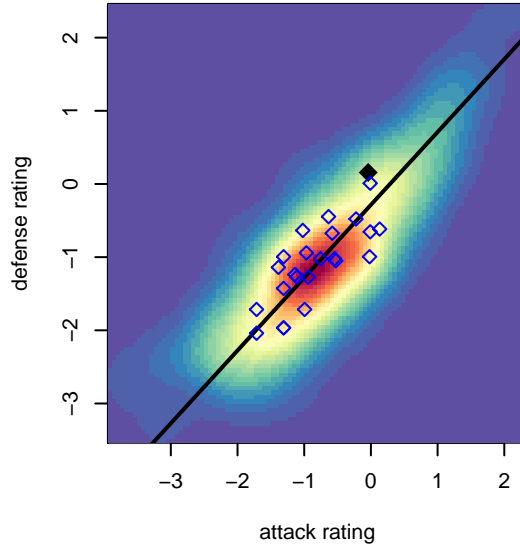
**BYSC Select Blue Angels G02**  
 Dots are actual minus expected GF (blue circles) and GA (red triangles).  
 Blue line is smoothed change in attack strength. Red is smoothed change in defense strength.



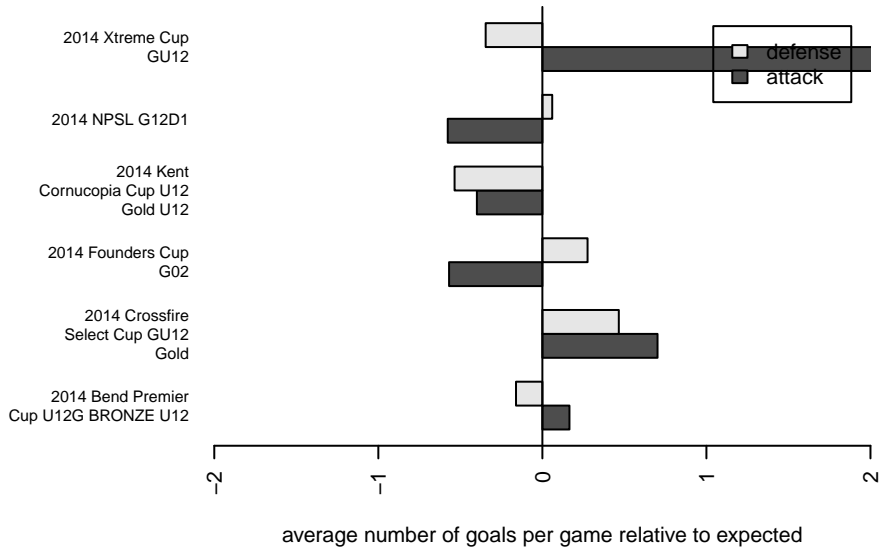
**attack and defense variance (black dot)  
relative to other teams  
and top 10 in region**



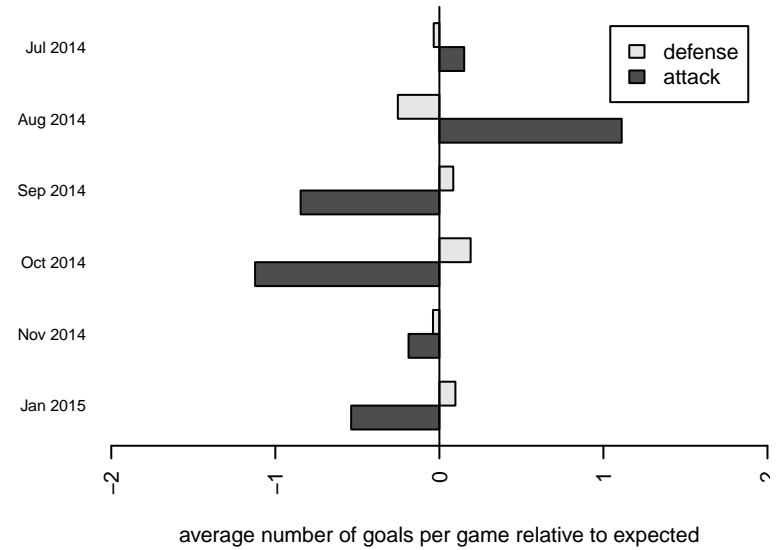
**attack and defense rating  
relative to others at age  
and all opponents in last 13 months**



**Performance relative to 13 month average**



**Performance relative to 13 month average**



| date       | home                              |   | away                              |   | venue                                 | pred.home | pred.away |
|------------|-----------------------------------|---|-----------------------------------|---|---------------------------------------|-----------|-----------|
| 2015-02-08 | BYSC Select Blue Angels G02       | 1 | Lake Hills Supreme G02            | 0 | 2014 Founders Cup G02                 | 2.10      | 0.31      |
| 2015-02-07 | BYSC Select Blue Angels G02       | 1 | Crossfire Select Reimbold G02     | 0 | 2014 Founders Cup G02                 | 1.16      | 0.95      |
| 2015-01-31 | BYSC Select Blue Angels G02       | 4 | NSC Thunder G02                   | 0 | 2014 Founders Cup G02                 | 2.66      | 0.43      |
| 2015-01-24 | BYSC Select Blue Angels G02       | 3 | NSC Thunder G02                   | 0 | 2014 Founders Cup G02                 | 2.66      | 0.43      |
| 2015-01-17 | Washington Timbers Burgundy G02   | 0 | BYSC Select Blue Angels G02       | 6 | 2014 Founders Cup G02                 | 0.27      | 7.33      |
| 2015-01-10 | BYSC Select Blue Angels G02       | 2 | Seattle United S Black G02        | 1 | 2014 Founders Cup G02                 | 4.50      | 0.27      |
| 2014-12-13 | Newport FC Tango G02              | 0 | BYSC Select Blue Angels G02       | 2 | 2014 NPSL G12D1                       | 0.36      | 3.45      |
| 2014-12-06 | BYSC Select Blue Angels G02       | 4 | Seattle United Shoreline Blue G02 | 1 | 2014 NPSL G12D1                       | 2.16      | 0.57      |
| 2014-11-22 | Crossfire Select Reimbold G02     | 2 | BYSC Select Blue Angels G02       | 1 | 2014 NPSL G12D1                       | 0.95      | 1.16      |
| 2014-11-15 | BYSC Select Blue Angels G02       | 3 | Seattle United S Blue G02         | 0 | 2014 NPSL G12D1                       | 2.89      | 0.53      |
| 2014-11-01 | PSA Force G02                     | 0 | BYSC Select Blue Angels G02       | 2 | 2014 NPSL G12D1                       | 0.40      | 2.52      |
| 2014-10-25 | BYSC Select Blue Angels G02       | 0 | Newport FC Tango G02              | 0 | 2014 NPSL G12D1                       | 3.45      | 0.36      |
| 2014-10-18 | BYSC Select Blue Angels G02       | 6 | Mukilteo Rush G02                 | 0 | 2014 NPSL G12D1                       | 5.45      | 0.37      |
| 2014-10-04 | Crossfire Select Miller G02       | 1 | BYSC Select Blue Angels G02       | 1 | 2014 NPSL G12D1                       | 0.84      | 1.47      |
| 2014-09-27 | BYSC Select Blue Angels G02       | 1 | Crossfire Select Reimbold G02     | 1 | 2014 NPSL G12D1                       | 1.16      | 0.95      |
| 2014-09-20 | Seattle United S Blue G02         | 0 | BYSC Select Blue Angels G02       | 3 | 2014 NPSL G12D1                       | 0.53      | 2.89      |
| 2014-09-13 | BYSC Select Blue Angels G02       | 0 | Kent United Green G02             | 2 | 2014 NPSL G12D1                       | 1.18      | 1.29      |
| 2014-09-06 | Seattle United Shoreline Blue G02 | 0 | BYSC Select Blue Angels G02       | 0 | 2014 NPSL G12D1                       | 0.57      | 2.16      |
| 2014-08-24 | BYSC Select Blue Angels G02       | 5 | PS Slammers Black G02             | 0 | 2014 Xtreme Cup GU12                  | 3.38      | 0.75      |
| 2014-08-24 | NSC Thunder G02                   | 1 | BYSC Select Blue Angels G02       | 4 | 2014 Xtreme Cup GU12                  | 0.43      | 2.66      |
| 2014-08-23 | NW United Classic G02             | 1 | BYSC Select Blue Angels G02       | 9 | 2014 Xtreme Cup GU12                  | 0.28      | 6.99      |
| 2014-08-22 | BYSC Select Blue Angels G02       | 9 | Seattle Celtic White G02          | 1 | 2014 Xtreme Cup GU12                  | 5.74      | 0.15      |
| 2014-08-03 | BYSC Select Blue Angels G02       | 1 | Elko Indar G02                    | 2 | 2014 Bend Premier Cup U12G BRONZE U12 | 2.99      | 0.69      |
| 2014-08-02 | BYSC Select Blue Angels G02       | 5 | Elko Indar G02                    | 0 | 2014 Bend Premier Cup U12G BRONZE U12 | 2.99      | 0.69      |
| 2014-08-02 | BYSC Select Blue Angels G02       | 6 | Firestorm G02                     | 0 | 2014 Bend Premier Cup U12G BRONZE U12 | 7.53      | 0.17      |
| 2014-08-01 | BYSC Select Blue Angels G02       | 4 | Harbor Premier Green G02          | 1 | 2014 Bend Premier Cup U12G BRONZE U12 | 1.83      | 0.81      |
| 2014-07-27 | BYSC Select Blue Angels G02       | 4 | FC Alliance B G02                 | 0 | 2014 Crossfire Select Cup GU12 Gold   | 2.43      | 0.35      |
| 2014-07-27 | Kent United Green G02             | 0 | BYSC Select Blue Angels G02       | 3 | 2014 Crossfire Select Cup GU12 Gold   | 1.29      | 1.18      |

| <b>date</b> | <b>home</b>                 |   | <b>away</b>                 |   | <b>venue</b>                          | <b>pred.home</b> | <b>pred.away</b> |
|-------------|-----------------------------|---|-----------------------------|---|---------------------------------------|------------------|------------------|
| 2014-07-26  | Seattle Celtic Green G02    | 0 | BYSC Select Blue Angels G02 | 4 | 2014 Crossfire Select Cup GU12 Gold   | 0.52             | 1.77             |
| 2014-07-26  | BYSC Select Blue Angels G02 | 0 | Crossfire Select Miller G02 | 1 | 2014 Crossfire Select Cup GU12 Gold   | 1.47             | 0.84             |
| 2014-07-25  | Seattle United W Blue G02   | 0 | BYSC Select Blue Angels G02 | 3 | 2014 Crossfire Select Cup GU12 Gold   | 0.34             | 3.64             |
| 2014-07-13  | Seattle Celtic White G02    | 0 | BYSC Select Blue Angels G02 | 4 | 2014 Kent Cornucopia Cup U12 Gold U12 | 0.15             | 5.74             |
| 2014-07-13  | Kent United Green G02       | 3 | BYSC Select Blue Angels G02 | 2 | 2014 Kent Cornucopia Cup U12 Gold U12 | 1.29             | 1.18             |
| 2014-07-12  | MVP Marauders White G02     | 0 | BYSC Select Blue Angels G02 | 3 | 2014 Kent Cornucopia Cup U12 Gold U12 | 0.21             | 3.69             |
| 2014-07-11  | Kent United Green G02       | 3 | BYSC Select Blue Angels G02 | 1 | 2014 Kent Cornucopia Cup U12 Gold U12 | 1.29             | 1.18             |
| 2014-07-11  | FC Tacoma Blue G02          | 0 | BYSC Select Blue Angels G02 | 3 | 2014 Kent Cornucopia Cup U12 Gold U12 | 0.39             | 3.21             |